

# Budget 101

GCFA Spring Meeting

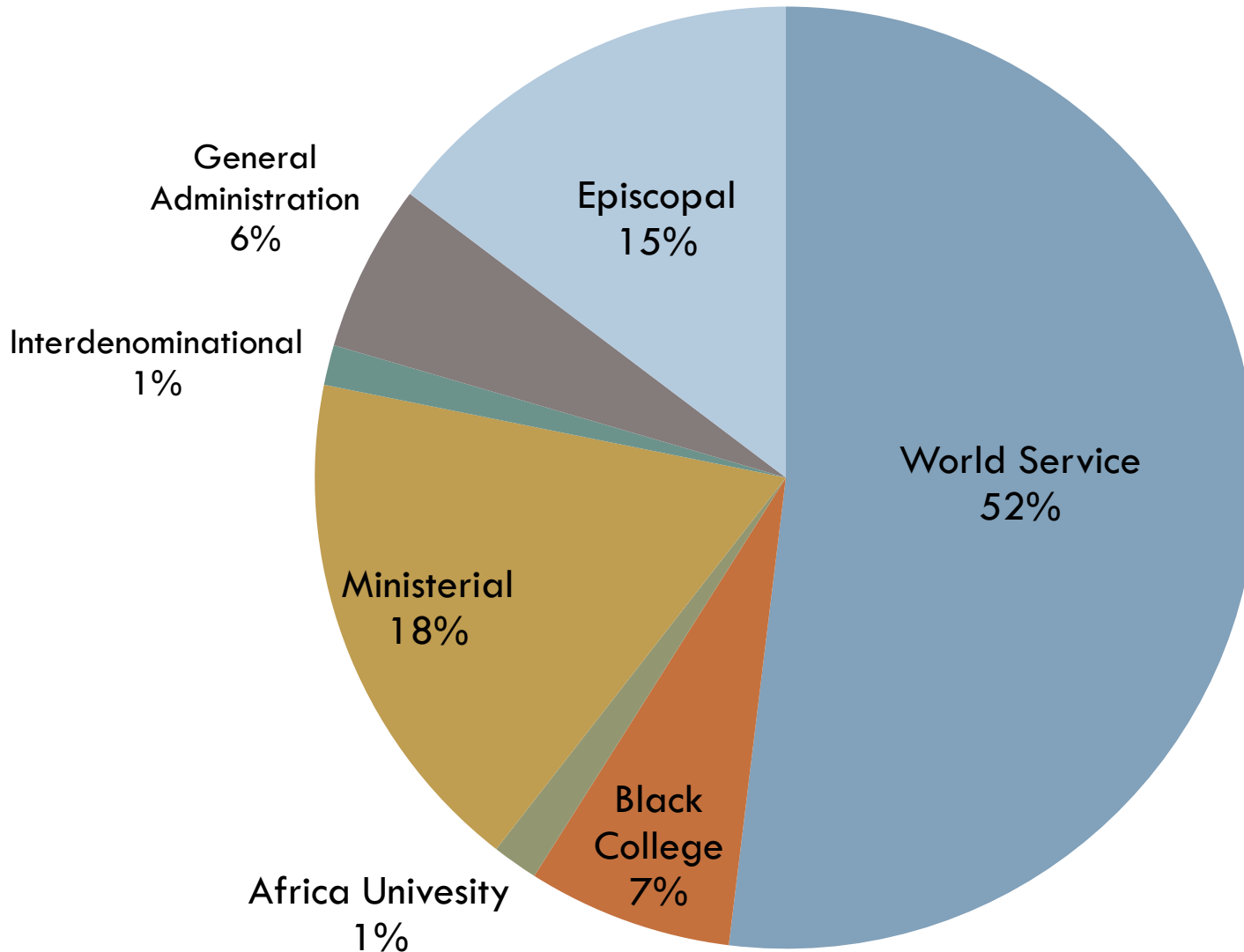
May 14, 2009

# General Apportioned Funds

Budget= \$641,897,000

- World Service Fund
- Ministerial Education Fund
- Black College Fund
- Africa University Fund
- Episcopal Fund
- General Administration Fund
- Interdenominational Cooperation Fund

# Amount Allocated for Apportioned Funds



\* Based on 2008 data rounded to the nearest whole



Global Health  
Initiative

Poverty

Leadership  
Development

Church Growth  
& Development

Other  
Disciplinary  
Mandates

Other  
Essential  
Ministries

Global Health Initiative

Poverty

Leadership Development

Church Growth & Development

Other Disciplinary Mandates

Other Essential Ministries

GBCS

GBGM

GBHEM

GBOD

GCAH

GCFA

GCORR

GCSRW

GCCUIC

GCUMM

UMCOM

# World Service Fund

Budget = \$333,356,000

Global Health  
Initiative

Poverty

Leadership  
Development

Church Growth  
& Development

Other  
Disciplinary  
Mandates

Other  
Essential  
Ministries

GBCS

GBGM

GBHEM

GBOD

GCAH

GCFA

GCORR

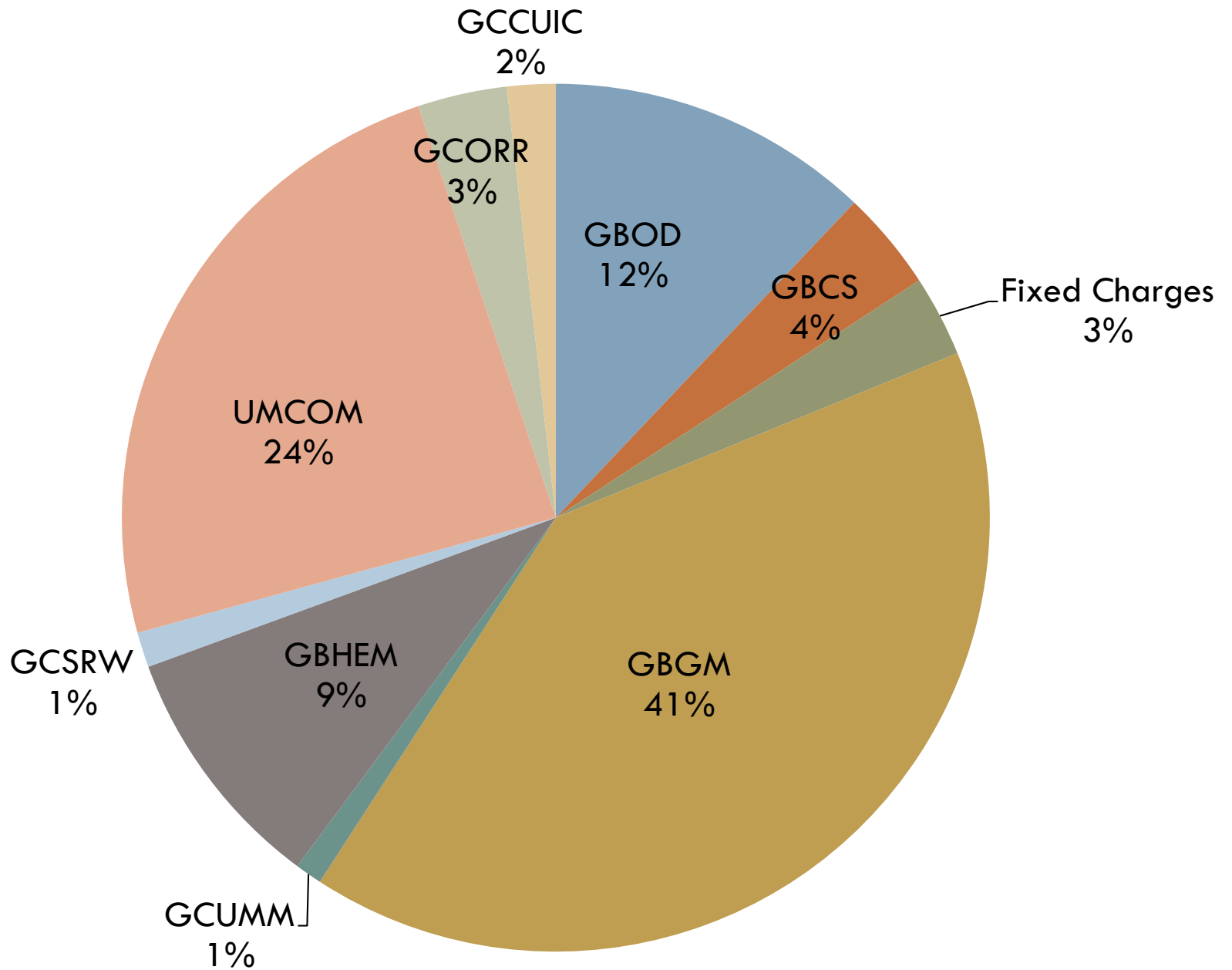
GCSRW

GCCUIC

GCUMM

UMCOM

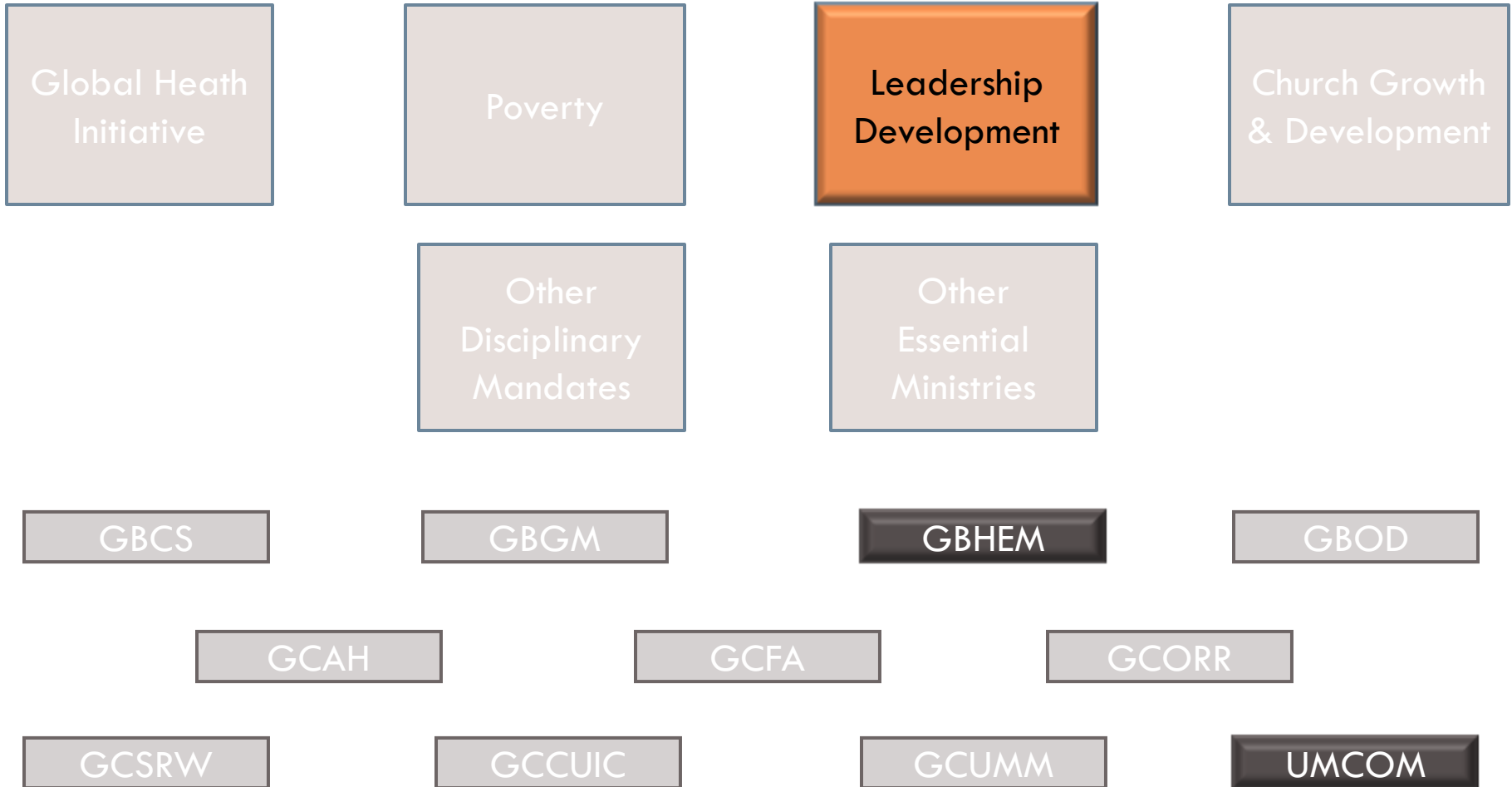
# Percentage of Apportioned World Service Funds\*



\* Based on 2008 data rounded to the nearest whole

# Ministerial Education Fund

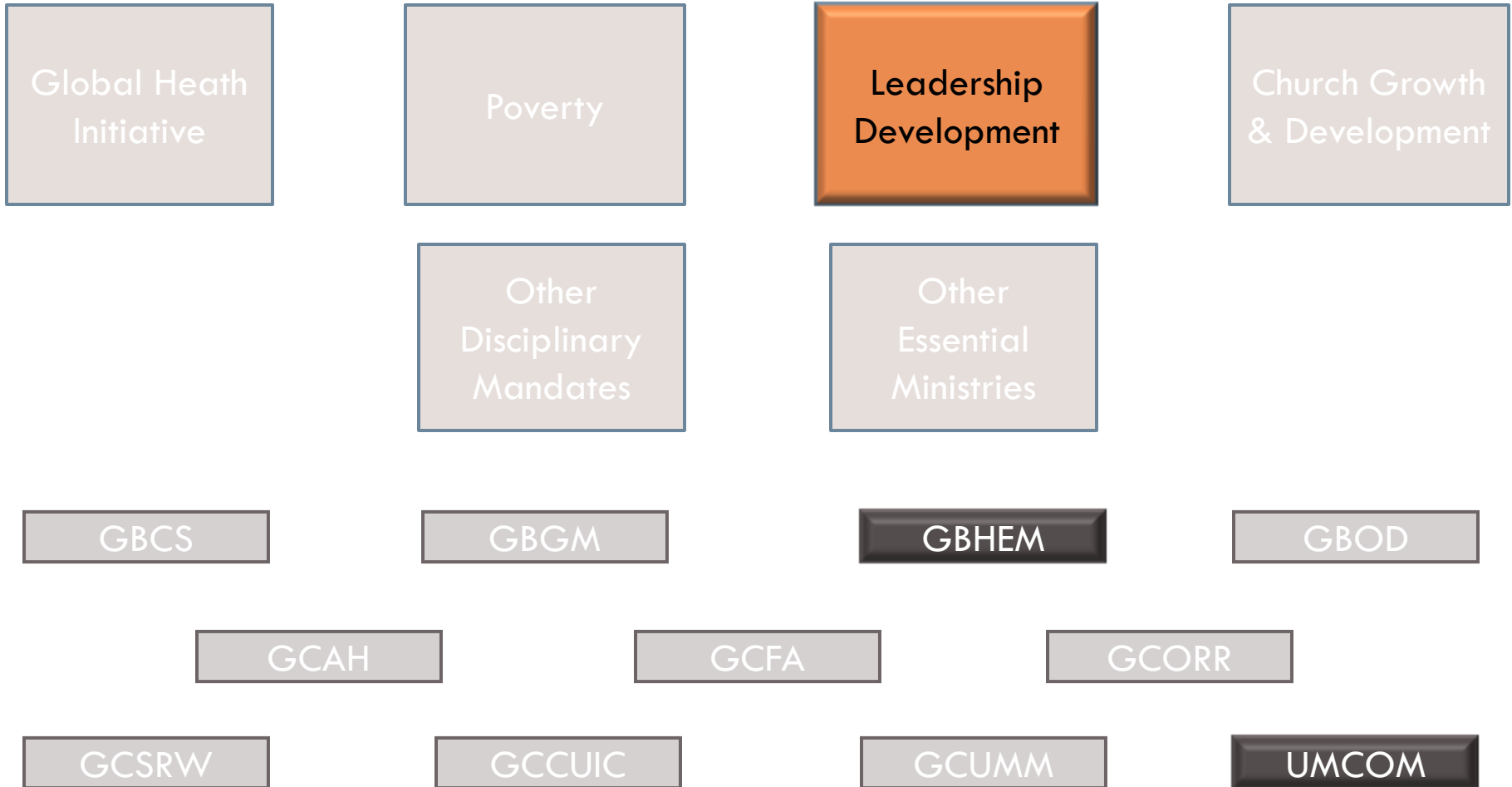
Budget \$113,130,000





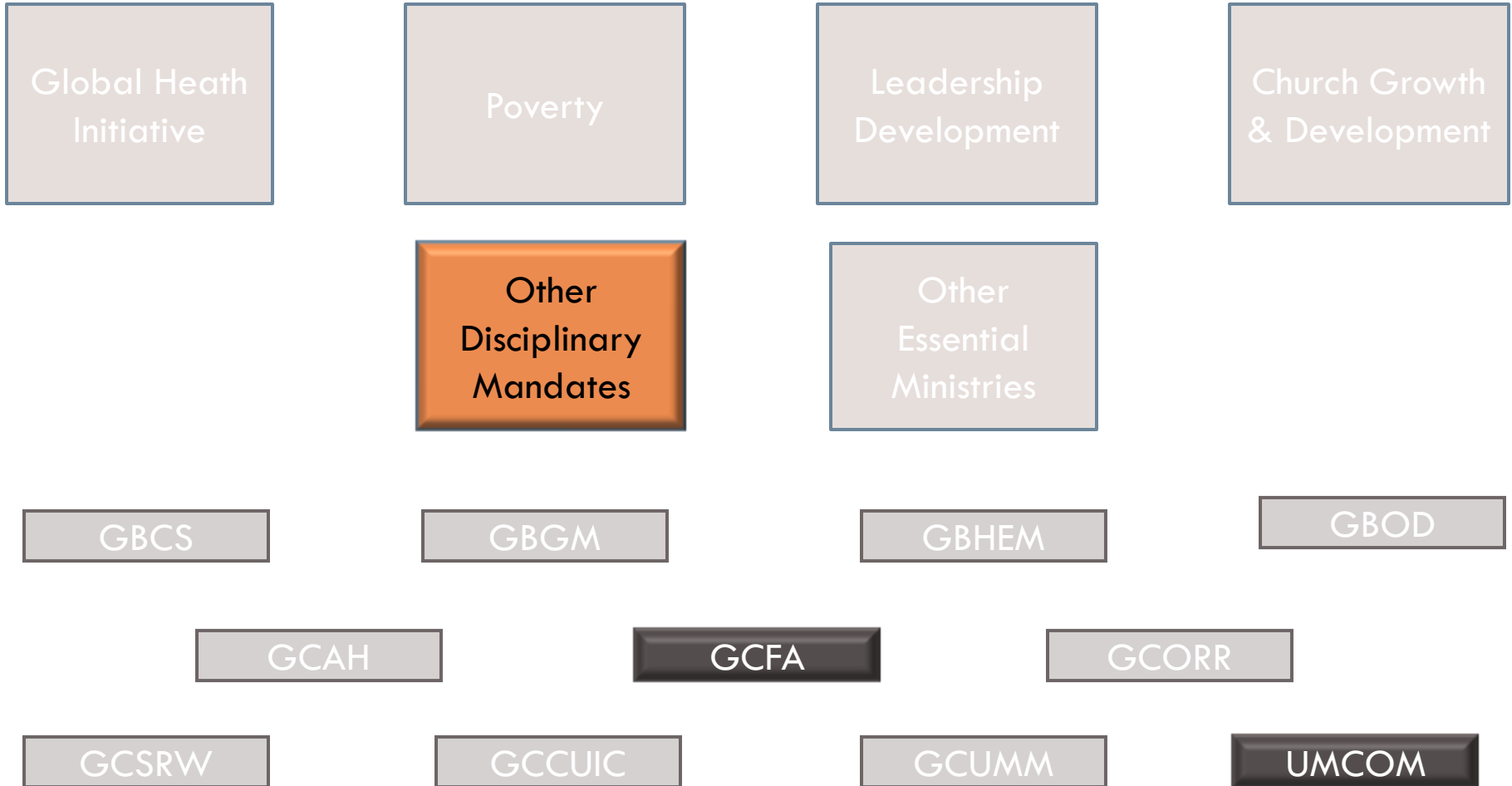
# Africa University Fund

Budget \$10,100,000



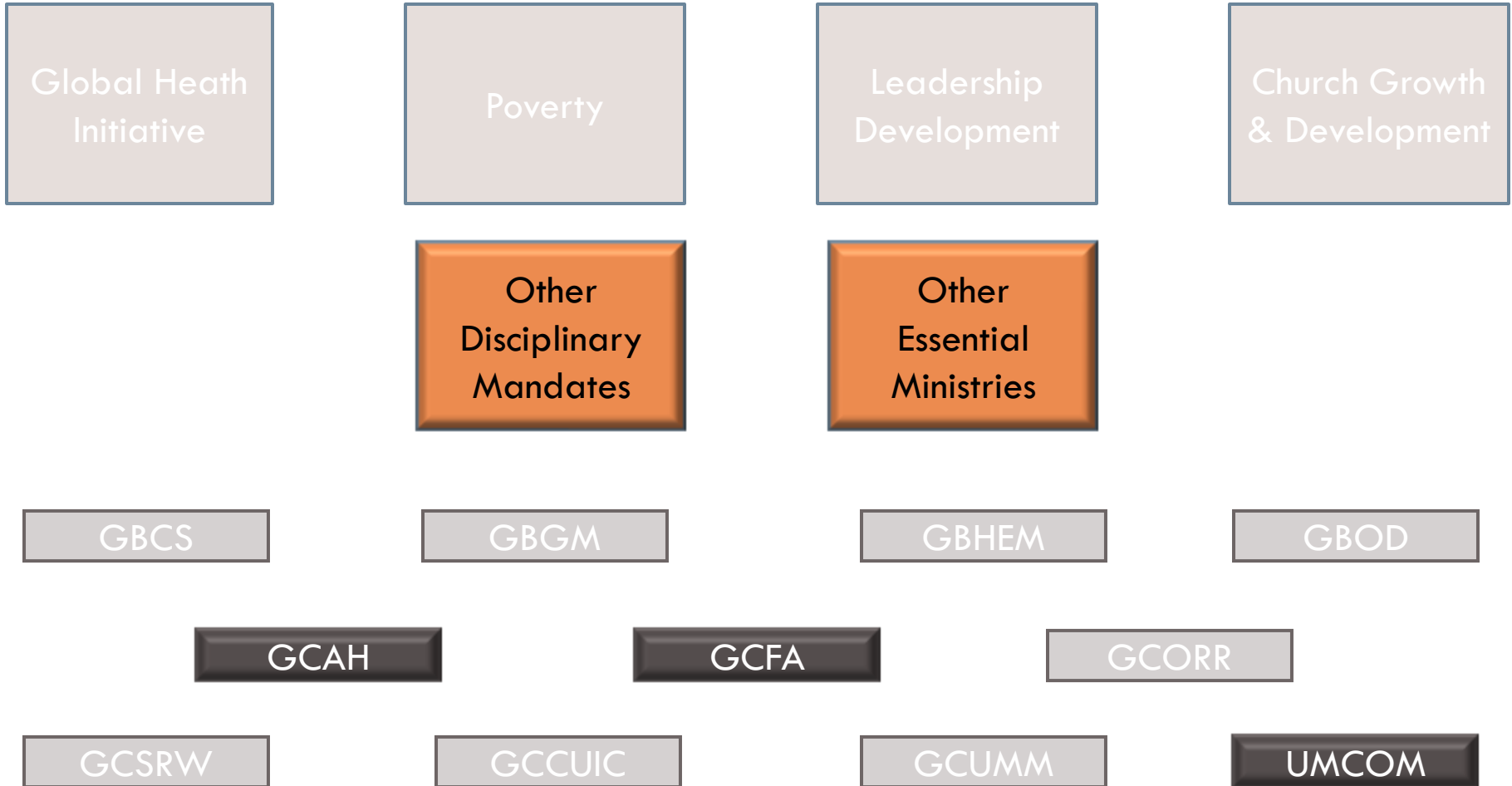
# Episcopal Fund

\$94,400,000



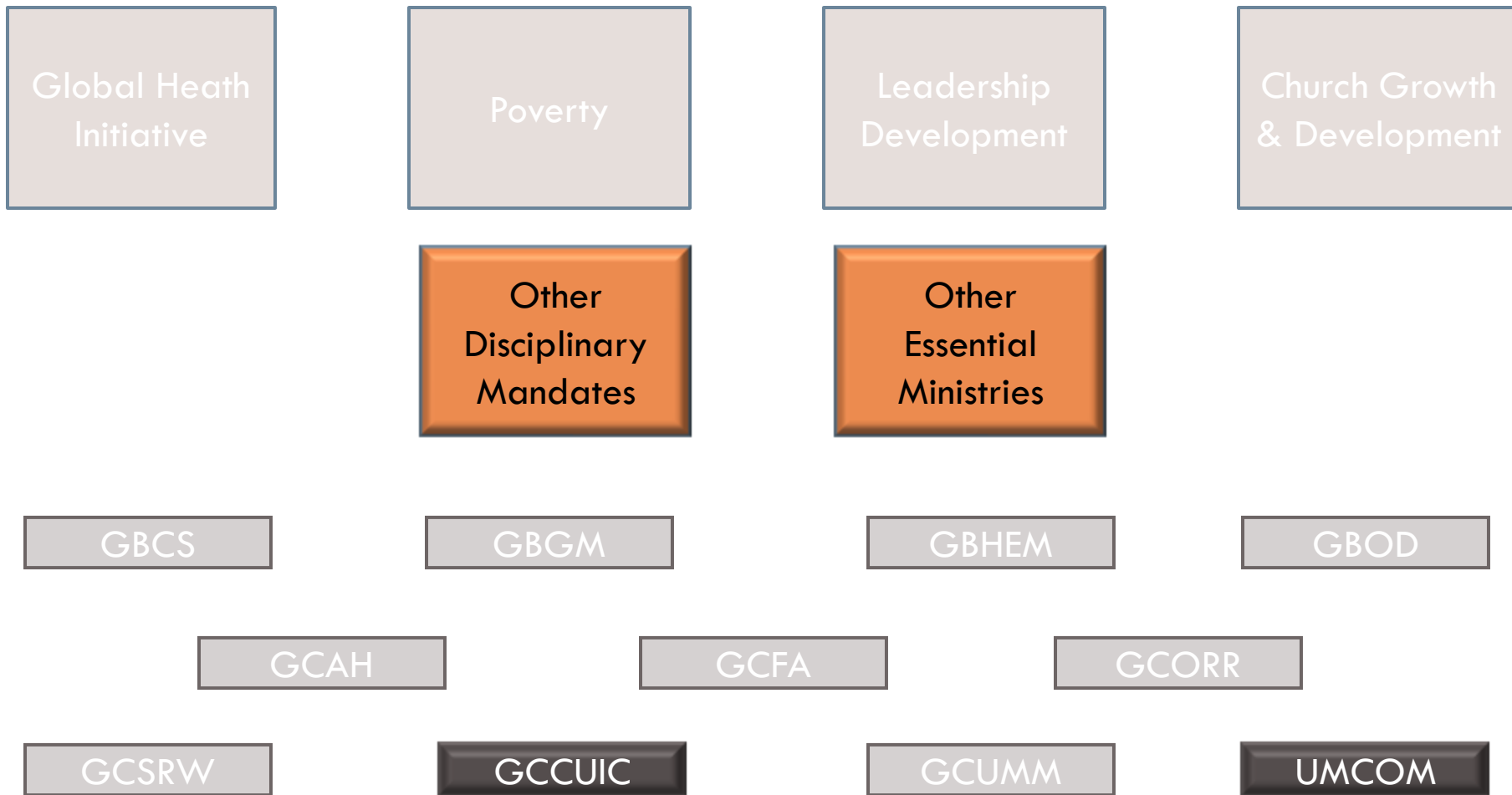
# General Administration Fund

Budget \$36,935,000



# Interdenominational Cooperation Fund

Budget \$8,848,000



Budget Begins  
Now

Presented to  
General Conference  
May 4, 2012

Submitted to print by  
September 2, 2011





Questions?